

Build with WA brick

Midland Brick

Helpful information for your prestart journey

The humble brick is regarded as one of the most durable and environmentally friendly building materials in history.

Although we may be biased, we also consider bricks to be one of the most beautiful.

Brickwork forms a huge part of the exterior look of your home.

So, to help you on your brick selection journey, we've broken down the most important information brick by brick.

OUR BRICKS ARE



Durable



**Weather
proof**



**Energy
efficient**



Stylish



**Better
with age**



**Fire
Resistant**



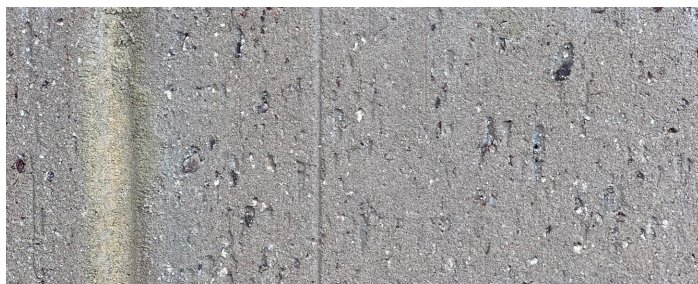
**Noise
Reduction**

Every brick is unique

As our clay bricks are fired in the kiln, a variety of striking colours are produced. As a result, individual bricks can vary in colour from batch to batch. This is why it's important that bricks are blended from different packs as they are laid. The final colour also depends on the type of clay used and any additional glazes applied.

Drag marks

You may notice vertical lines on the brick face, also known as 'drag marks'. These marks are a natural feature of the product produced during the manufacturing process. The performance of the product is not affected by these marks.



Bricks absorb water

During installation, bricks will absorb water from the ground, rain and the mortar. In some cases, this can make the laid bricks look darker or create a pink hue. However, there's no reason to panic. As the bricks dry out, the colour will return to normal.

Brick crazing

Some bricks also have surface crazing or cracks, which are a result of the manufacturing process. These natural features can be more visible on bricks with glaze or surface coatings.



Two tips for building with bricks

1. Do the research

Display boards, sample packs or online images will only give you a starting idea. We always recommend visiting display homes and display centres so you can see how your chosen brick will look on a finished wall, home or building.

2. Check your builder specifications

Be sure to check your builder specifications, as mortar colour, joint and bond style may already be set as part of your home package. If they're not, there are plenty of possible combinations of bricks, mortar, joint type and bond style you can explore, all of which will impact the final look of your brickwork.

Ask your builder or Brick Sales Representative for the locations of display homes that feature your brick choice.

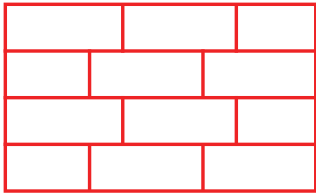
Brickwork Breakdown

Midland Brick

Bond style

This term is used to describe laying bricks in different patterns. The most common style is brick bond or running bond.

The most popular style is 1/3 brick bond.



1/3 brick bond

Mortar

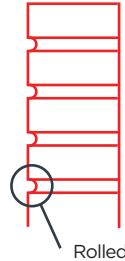
A binding material that forms a joint to hold bricks together in one durable structure. During the laying process, the mortar joints between the bricks may vary in size. This is done by the mason to minimise cuts and adjust for varying brick and wall sizes.

On some internal brick walls there may even be mortar joints that are not completely filled with mortar, which is a standard installation practice in WA.

Joints

This refers to the mortar surrounding the bricks, which helps bond them together.

These can be produced in various styles, with the most common being a rolled or ironed joint.



Rolled

Face Bricks and Common Bricks

All bricks have a 'face'. If a brick is to be seen it is known as a face brick. Common bricks (or utility bricks) are where there is no need for a beautiful face, for example where the walls are internal and will be rendered.



Fast fact: A row of bricks is called a course

Brick FAQs

Why are my bricks stained?

If your bricks have green or yellow staining, there's no need to worry. This discoloration, known as vanadium staining, can appear on bricks during or after laying and is neither permanent nor harmful.

The staining can be due to excessive water penetration (e.g. bricks onsite during wet weather). As the bricks dry out, they bring the natural salts to the surface.

Vanadium staining can also be brought out by hydrochloric acid used during the mortar staining cleaning process.

Why is there white powder on my bricks?

Bricks can sometimes develop a white powdery substance called efflorescence. This is caused by the presence of soluble salts (typically sourced from the mortar or adjoining building elements) and excessive amounts of water entering bricks.

As the bricks dry out, they deposit salts on the surface.

Most efflorescence will disappear naturally, but it can also be removed using a stiff brush.



How do I remove vanadium staining?

Vanadium staining will either wash off in time, or it can be removed with a chemical treatment applied by a professional brick cleaner.



Did you know?

Vanadium salts are present in most clays sourced in WA.

