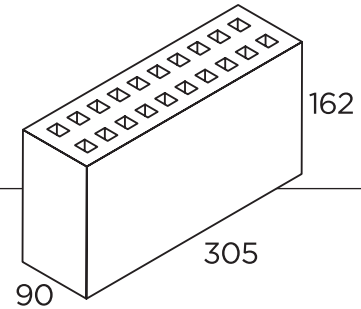


Acoustic Maxibrick



PRODUCT INFORMATION

Work Size (mm)	305 x 90 x 162
Dimensional Category	DW1
Approximate Unit Weight (kg)	6.3-6.6
Approximate Bricks Per m ²	18.5
Bricks Per Pack	132/138
Pack Weight (kg) <i>includes+3% moisture</i>	857-938
Unconfined Compressive Strength (MPa)	>12
Cold Water Absorption (%)	<10
Durability Class	General Purpose
Potential to Effloresce	Slight
Susceptibility to Lime Pitting	Slight
Core/Void Percentage	<30
Fire Resistance - Insulation. Unrendered (minutes)	60

Specific Results for Acoustic Maxibrick Cavity Walls

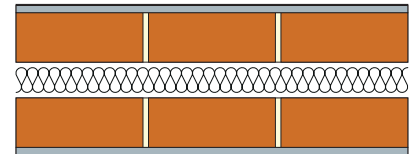
Tests comply with AS1191-2002. Conducted by Acoustic Laboratories Australia

CONSTRUCTION DESCRIPTION

Sound reduction of wall consisting of two leaves of 90mm Acoustic Maxibrick with:

- (a) all joints filled solid with mortar; and
- (b) a cavity of not less than 70mm between leaves; and
- (c) 75mm thick glass wool insulation with a density of 11kg/m³ in the cavity; and
- (d) no wall ties; and
- (e) 13mm render with 2mm plaster set coat on each outside face.

Test No ALA-05-082-1

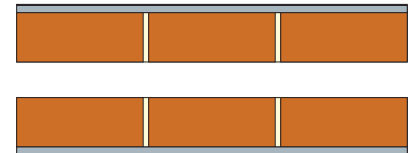


RATING: R_w 67 (-2, - 6)

Sound reduction of wall consisting of two leaves of 90mm Acoustic Maxibrick with:

- (a) all joints filled solid with mortar; and
- (b) a cavity of not less than 70mm between leaves; and
- (c) no wall ties; and
- (d) 13mm render with 2mm plaster set coat on each outside face.

Test No ALA-05-082-2

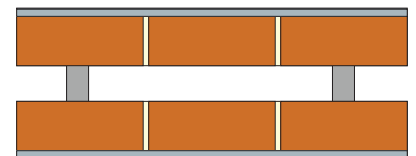


RATING: R_w 60 (-1, - 5)

Sound reduction of wall consisting of two leaves of 90mm Acoustic Maxibrick with:

- (a) all joints filled solid with mortar; and
- (b) a cavity of not less than 70mm between leaves; and
- (c) Matrix resilient wall ties; and
- (d) 13mm render with 2mm plaster set coat on each outside face.

Test No ALA-05-082-3



RATING: R_w 59 (-2, - 6)

Note: Midland Brick is not in a position to give opinions on performance of walls that fall outside the above tested wall systems. For further information please consult a qualified Acoustic Engineer.

This technical information represents average properties obtained from production runs. If specific results are required, samples should be taken from current production runs. AS/NZS 4456 and 3700 is used as applicable. Durability classifications are based on product knowledge under local (Perth) climatic conditions. Information subject to change without notice.

If you require specific or improved product specification, please contact your Sales Representative.



For more information
about Midland Brick



Call us on **13 15 40**



Visit our website at **midlandbrick.com.au**



Drop into a Midland Brick Selection Centre or Reseller



DISCLAIMER. The information presented herein is supplied in good faith and to the best of our knowledge was correct at the time of preparation. No responsibility can be accepted by Midland Brick, its staff or its agents for any errors or omissions. Users are advised to make their own determination as to the suitability of this information in relation to their particular purposes and specific circumstances. Since the information contained in this document may be applied under conditions beyond our control, no responsibility can be accepted by Midland Brick, its staff or its agents for any loss or damage caused by any person acting or refraining from action as a result of this information.