

ATTENTION CUSTOMER: The safety of your load is your responsibility.

Please read this form and complete the checklist before leaving a Midland Brick site.

We encourage you to visit the website link below to understand your responsibilities.

<https://www.mainroads.wa.gov.au/globalassets/heavy-vehicles/compliance-enforcement/cor/chain-of-responsibility-cars-utes-vans-light-vehicles.pdf>

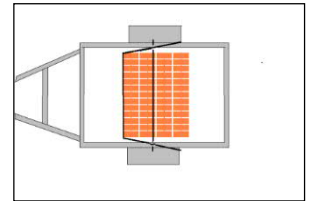
1. No person is to approach a forklift whilst it is moving, and you must always be in full view of the forklift driver and must remain near your car and a minimum of 3 metres from the forklift.
2. Do not stand or walk near a vehicle if it is in motion or being loaded or unloaded.
3. During a journey, some loads can settle and shift. You must periodically check the load and lashings
4. **MAXIMUM LOAD PER PICK UP IS 4 PACKS/PALLETS AT A TIME**

UTE or TRAILER - One Leaf or less of a pack from a Midland Brick product on a trailer

- Must be flat in the tray or trailer and preferably covered with a Cargo Net. No Tarpaulins.

UTE or TRAILER - Packs 2/3 or more on a trailer

- Must be loaded over the centre of the axle.
- Pack to be plastic wrapped and/or meshed if the customer provides.
- Or Pack to be covered with a Cargo Net.
- Use a 2.5 tonne rated strap in a diagonal fashion around front of pallet.
- Use a 2.5 tonne rated strap over the top of a pallet.



Loose Pieces loaded into the rear of your vehicle must have an enclosed boot or a Safety Shield

Enclosed Boot – Cargo Cover	Enclosed Boot – Cargo Barrier	Danger - Not Enclosed – No Front Safety Shield	Preferred Loading using a Net Restraint
			

Weights for Loose Pieces and Bricks or Pavers loaded into a Vehicle			
VEHICLE TYPE	PRODUCT WEIGHT	RESTRICTION	COMMENTS
Hatchbacks	Max. 70kg (0.07 tonne)	Must have a Cargo Cover	Based on a small vehicle. The weight at the rear of the vehicle transfers forward.
Sedan / Small Station Wagon	Max. 100 kg (0.10 tonne)	Must have an Enclosed Boot or a Cargo Barrier	Based on a medium sized car. The weight at the rear of the vehicle transfers forward.
SUV / Four Wheel Drive	Up to 150 kgs (0.15 tonne)	Enclosed Boot or a Cargo Barrier or Cargo Cover	SUV and Four-Wheel Drives can carry more weight at the rear.
Van	750 kgs to 1000 kgs (0.75 – 1 tonne)	Must have a Cargo Barrier	Must have suitable cargo latches and be able to strap and secure the product
Dual Cab Ute	750 kgs Max (0.750 tonne)	As above for Ute or Trailer	Dual Cab Utes with a flatbed tray must have ratchet straps and corners
Single Cab Ute	750 kgs to 1000 kgs (0.75 – 1 tonne)	Tray sides and as above for Utes and Trailers	Single Cab Utes with a flatbed tray must have ratchet straps and corners
Box Trailer (6x4) – No Brakes	Max 500 kgs (0.5 tonne)	As above for Ute or Trailer	No trailer sides then No Loose Product
Tandem Trailer – No Brakes	Max 500 kgs (0.5 tonne)	As above for Ute or Trailer	No trailer sides then No Loose Product
Single Trailer – Trailer Brakes	Max – As per compliance plate	As above for Ute or Trailer	No trailer sides then No Loose Product
Tandem Trailer – Trailer Brakes	Max – As per compliance plate	As above for Ute or Trailer	No trailer sides then No Loose Product
Truck	Max – As per compliance plate	Must have angles and straps to secure the load	All retail product to be shrink-wrapped Curtain-Side vehicles must have corners and straps